

Rittal – The System.

Faster – better – everywhere.

Digital Brochure

ENCLOSURES

POWER DISTRIBUTION

CLIMATE CONTROL

IT INFRASTRUCTURE

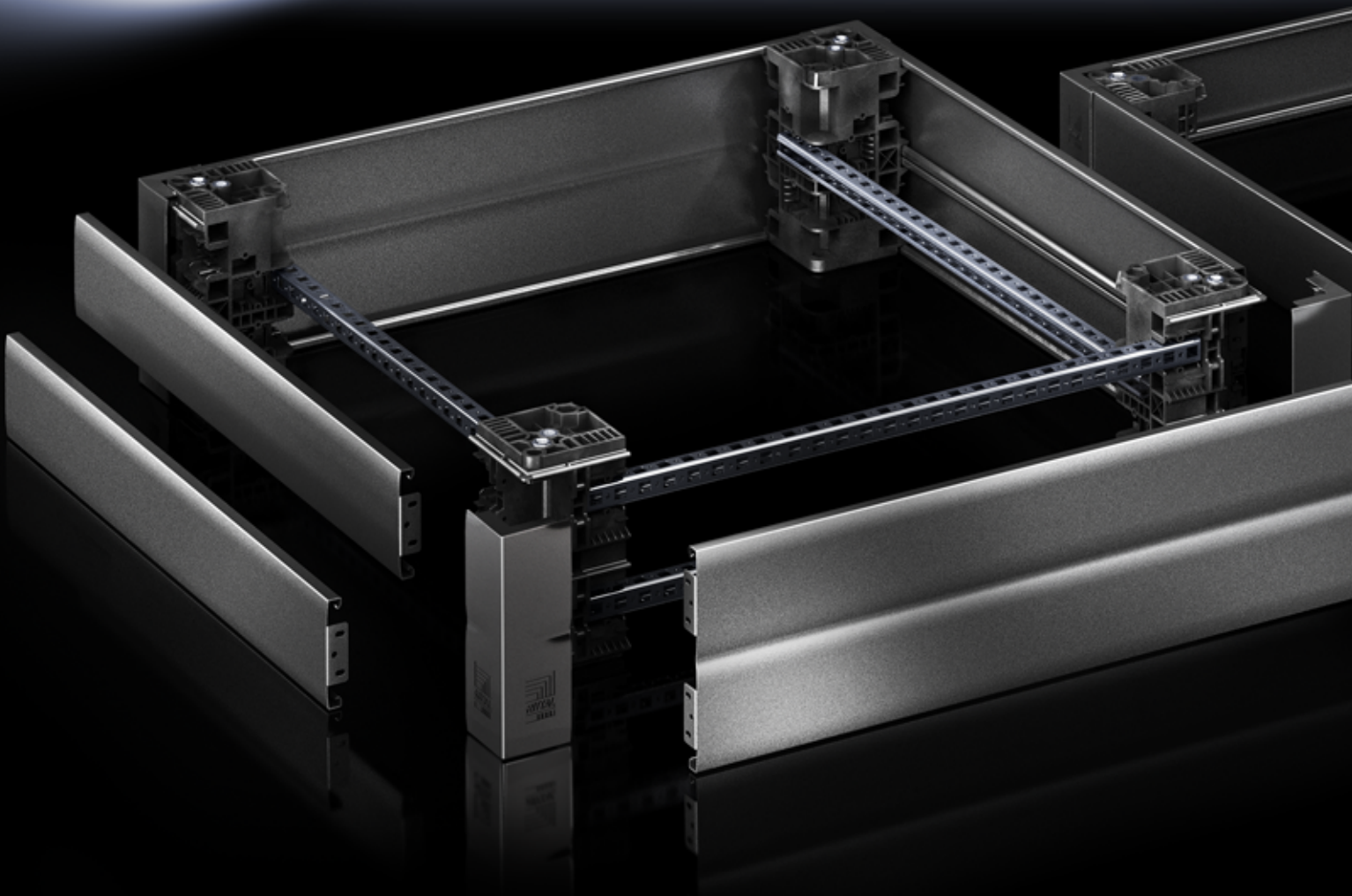
SOFTWARE & SERVICES

FRIEDHELM LOH GROUP

www.rittal.ca



The Rittal Base/Plinth System Flex-Block



Saves time

- Fast assembly as base/plinth components clip together easily
- Easy to buy thanks to tool-free baying clip
- Easy to transport enclosure in empty and unconfigured state by removing base/plinth trim panel



Easy to install

- Tool-free assembly of all base/plinth components
- Tool-free assembly of accessories, e.g., baying and leveling feet
- Symmetrical enclosure widths and depths
- A combination of 100 and 200 mm high trim panels can be used with 200 mm high Flex-Block



Large mounting surface

- Space-saving cable routing in base/plinth, allowing more space for enclosure fittings
- Expansion using punched rail – can be clipped in either from the inside or from the outside
- Flexible configuration: punched rail with 25 mm hole pattern



Base/Plinth

Flex-Block Base/Plinth System

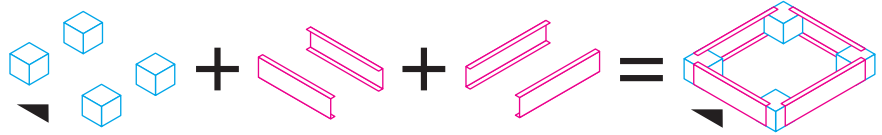


The Rittal Base/Plinth System

Flex-Block

Flexible base/plinth system for practically every application. Thanks to separate package units of corner pieces and trim panels, the system can be arranged individually for every scenario.

The weight of the enclosure is supported by the corner pieces so that the trim panels can be easily clipped in or out at any time. The base/plinth trim panels are symmetrical and can be freely interchanged with one another in both width and depth. This results in never-before seen levels of flexibility and promises major savings when enlarging bases/plinths.



One model number for the **Flex-Block corner pieces** at the front and back

One model number for the **Flex-Block trim panels** at the front and back

One model number for the **Flex-Block trim panels** at the side

A complete **Flex-Block base/plinth**

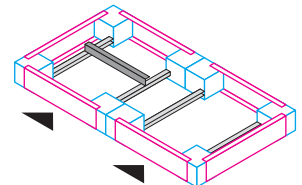
Base/plinth, height 4" (100 mm)							
Base/plinth, height 8" (200 mm) with 8" (200 mm) panels							
Base/plinth, height 8" (200 mm) Combination 4" (100 mm) and 8" (200 mm) trim panels							

Function and Cost Benefits

Order scope	Beneficial features	High potential for savings with Flex-Block 4" (100 mm) in comparison to complete Flex-Block base/plinth
3 packs of Flex-Block corner pieces	The enclosures are sturdily supported on the corner pieces. Can be transported by high-lift truck or lift truck when used with individual enclosures.	12 trim panels
3 packs of Flex-Block corner pieces 4 packs of Flex-Block corner pieces	Completely closed row of bases/plinths, no panels between the enclosure fields. This results in more space for installation and cable entry.	4 trim panels
3 packs of Flex-Block corner pieces 2 packs of Flex-Block trim panels	Trim panels are only needed in visible areas, no panels between the enclosure fields. This results in more space for installation and cable entry.	8 trim panels

Other options:

- Individual cable clamping solutions can be fitted in any enclosure field using system accessories
- Depending on the requirement, either 4" (100 mm) high trim panels or 8" (200 mm) high trim panels can be used with 8" (200 mm) Flex-Block corner pieces



Flex-Block Base/Plinth System

Flex-Block Corner Pieces

for TS, TS IT, SE, PC

High-strength plastic corner pieces for individual tool-free assembly with Flex-Block trim panels and accessories.

Material:

- Corner pieces: Fiberglass-reinforced plastic
- Cover caps: ABS

Color:

- RAL 9005

Supply includes:

- 1 set =
 - 4 corner pieces
 - 4 cover caps
- Assembly components for mounting on the enclosure

Height of corner pieces inches (mm)	Model No.
4 (100)	8100.000
8 (200)	8200.000



Accessories:

- Flex-Block trim panels, see page 425
- Punched rail 23 x 23 mm, see page 527
- Baying clip 8000.100, see page 425
- Adapter sleeve 8000.500, see page 437
- Base mounting plate 2817.000, see page 430



Flex-Block Trim Panels

for Flex-Block corner pieces

For tool-free assembly. With symmetrical enclosure dimensions, trim panels have identical width and depth.

Material:

- Carbon steel

Color:

- RAL 9005

Supply includes:

- 1 set = 2 trim panels

4" (100 mm) high, solid

For enclosure width and depth in inches (mm)	Model No.
12 (300)	8100.300
16 (400)	8100.400
20 (500)	8100.500
24 (600)	8100.600
32 (800)	8100.800
39 (1000)	8100.010
47 (1200)	8100.120
63 (1600)	8100.160
71 (1800)	8100.180

8" (200 mm) high, solid

For enclosure width and depth in inches (mm)	Model No.
12 (300)	8200.300
16 (400)	8200.400
20 (500)	8200.500
24 (600)	8200.600
32 (800)	8200.800
39 (1000)	8200.010
47 (1200)	8200.120

4" (100 mm) high, vented

For enclosure width and depth in inches (mm)	Model No.
24 (600)	8100.602
32 (800)	8100.802



Accessories:

- Filter mats for vented Flex-Block trim panels 7583.500, see page 431



Baying Clip

for baying the Flex-Block corner pieces

Tool-free baying of Flex-Block base/plinths using a simple clip system.

Material:

- Fiberglass-reinforced plastic

Color:

- RAL 9005

Packs of	Model No.
12 pc(s).	8000.100



Base/Plinth

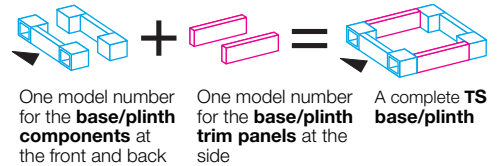
TS Base/Plinth

The Variety of a Modular Base/Plinth System

Regardless of the enclosure depth: The front and rear base/plinth components, prefitted with corner pieces, are always the same for the chosen width.

You only have to choose the side trim panels to match the enclosure width and the desired base/plinth configuration. Thanks to the modular concept, considerable benefits in cost and function can be achieved.

Mounting onto the enclosure can be easily effected from the outside. The space inside the base/plinth offers a range of options for the cable management mounting levels.



Base/plinth height inches (mm)	Basic form	Cable routing options				Stabilization of bayed bases/plinths
4 (100)						
8 (200)						

Function and Cost Benefits

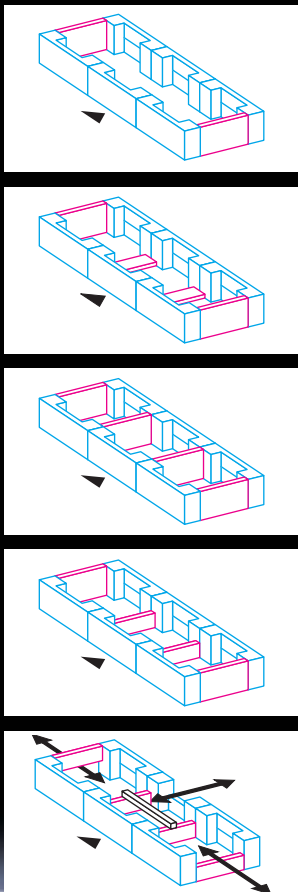
Fewer parts, more possibilities, lower costs for procurement, warehousing and assembly – the formula behind the modular base/plinth system.

The following table shows just five of the multitude of possible solutions on three bayed bases/plinths (200 mm high) and the potential savings on trim panels in comparison to a 200 mm base/plinth system each with two 100 mm high side panels.

Order scope	Beneficial features	Potential saving instead of 12x 4" (100 mm) trim panels
3 packs of base/plinth components 1 pack of base/plinth trim panels, 8" (200 mm) high	Continuous cable chamber	2x 8" (200 mm) trim panels
3 packs of base/plinth components 1 pack of base/plinth trim panels, 8" (200 mm) high 1 pack of base/plinth trim panels, 4" (100 mm) high 1 pack of base/plinth baying brackets 8601.100 (packs of 20 pieces) 4 pcs are needed for this solution	Additional stabilization for transport through base/plinth trim panels turned through 90°	2x 8" (200 mm) trim panels 2x 4" (100 mm) trim panels
3 packs of base/plinth components 2 packs of base/plinth trim panels, 8" (200 mm) high	Base/plinth partitioned from each other	4x 8" (200 mm) trim panels
3 packs of base/plinth components 1 pack of base/plinth trim panels, 8" (200 mm) high 1 pack of base/plinth trim panels, 4" (100 mm) high	Additional base/plinth connection	2x 8" (200 mm) trim panels 2x 4" (100 mm) trim panels

Other options:

- Cable entry at side by fitting a 4" (100 mm) base/plinth trim panel (top or bottom)
- Cable entry from rear by removing one or more trim panels of the base/plinth components
- Cable clamp rail fitted on the 4" (100 mm) high trim panels



Base/Plinth Components, Front and Rear

Carbon steel for TS, TS IT, SE, CM, TP, PC

Base/plinth component consisting of one trim panel and two prefitted corner pieces. On 200 mm high base/plinth components, one trim panel is in two parts to allow for cable entry.

Material:

- Base/plinth components: Carbon steel
- Cover caps: Plastic

Surface finish:

- Spray-finished

Color:

- Cover caps: RAL 9005/7035

Supply includes:

- 1 set =
2 base/plinth components, 4 cover caps,
4 screws and captive nuts M12 for mounting on the enclosure



Also required:

- Depending on application/load, base/plinth trim panels, side, see page 428

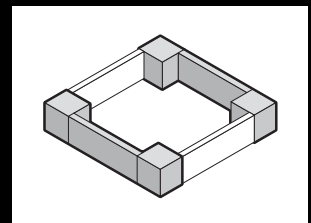


Accessories:

- Base mounting plate 2817.000, see page 430

Technical details:

Available on the Internet



4" (100 mm) high, color: RAL 7022

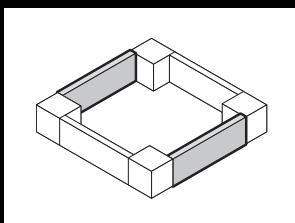
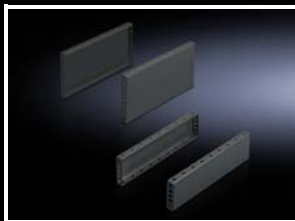
For enclosure width inches (mm)	Version	Model No.
12 (300)	Solid	8601.915
16 (400)	Solid	8601.400
20 (500)	Solid	8601.500
24 (600)	Solid	8601.600
32 (800)	Solid	8601.800
33 (850)	Solid	8601.850
39 (1000)	Solid	8601.000
43 (1100)	Solid	8601.300
47 (1200)	Solid	8601.200
63 (1600)	Solid	8601.920
71 (1800)	Solid	8601.980

8" (200 mm) high, color: RAL 7022

For enclosure width inches (mm)	Version	Model No.
12 (300)	Solid	8602.915
16 (400)	Solid	8602.400
20 (500)	Solid	8602.500
24 (600)	Solid	8602.600
32 (800)	Solid	8602.800
33 (850)	Solid	8602.850
39 (1000)	Solid	8602.000
43 (1100)	Solid	8602.100
47 (1200)	Solid	8602.200
63 (1600)	Solid	8602.920
71 (1800)	Solid	8602.980

Base/Plinth

TS Base/Plinth



Base/Plinth Trim Panels, Side

Carbon steel

for base/plinth components, front and rear

To mount between the base/plinth components. For height 200 mm, two 100 mm base/plinth trim panels can be used. Base/plinth panels (100 mm) can be installed turned through 90° to provide stabilization for bayed base/plinth components.

Material:

- Carbon steel

Surface finish:

- Spray-finished

Supply includes:

- 1 set =
2 base/plinth trim panels including parts for attaching to the base/plinth components



Also required:

- Base/plinth baying brackets 8601.100, see page 428, when fitting base/plinth trim panels turned through 90°



Accessories:

- Fastening bolts for base/plinth, see page 430

Technical details:

Available on the Internet

4" (100 mm) high, color: RAL 7022

For enclosure depth inches (mm)	Model No.
12 (300)	8601.030
16 (400)	8601.040
20 (500)	8601.050
24 (600)	8601.060
32 (800)	8601.080

8" (200 mm) high, color: RAL 7022

For enclosure depth inches (mm)	Model No.
12 (300)	8602.030
16 (400)	8602.040
20 (500)	8602.050
24 (600)	8602.060
32 (800)	8602.080



Base/Plinth Baying Brackets

for TS base/plinth

Essential where trim panels are mounted turned through 90° for additional stabilization when bayed enclosures are moved.

Additional brackets required for each panel: 2 pcs.

Material:

- Carbon steel

Surface finish:

- Zinc-plated

Supply includes:

- Screws M8 x 16 mm

Packs of	Model No.
20 pc(s).	8601.100

Cable Chamber

for TS, SE

With unique hole profile for individual system accessories.

Height: 200 mm

Material:

– Carbon steel

Color:

– RAL 7035

Supply includes:

- Carbon steel trim panels front and rear
- Assembly components for mounting on the enclosure

For enclosures		Model No.
Width inches (mm)	Depth inches (mm)	
16 (400)	20 (500)	8600.455
16 (400)	24 (600)	8600.465
24 (600)	20 (500)	8600.655
24 (600)	24 (600)	8600.665
32 (800)	20 (500)	8600.855
32 (800)	24 (600)	8600.865
47 (1200)	20 (500)	8600.255
47 (1200)	24 (600)	8600.265



Accessories:

- Side panels for cable chamber, see page 429

Technical details:

Available on the Internet

Sidewalls

for cable chamber

Height: 200 mm

Material:

– Carbon steel

Color:

– RAL 7035

Supply includes:

- Assembly components

For enclosure depth inches (mm)	Packs of	Model No.
20 (500)	2 pc(s).	8600.510
24 (600)	2 pc(s).	8600.520



Transport Castors

for TS base/plinth

Locate onto the base/plinth corner piece, height 100 or 200 mm.

Load capacity:

- Max. permitted load per twin castor: Static 100 kg

Supply includes:

- 1 set = 4 twin castors, 2 x with, 2 x without locks

Color:

– RAL 7022

Floor clearance inches (mm)	Model No.
4 (100)	8800.390



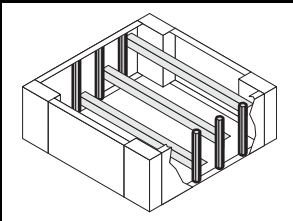
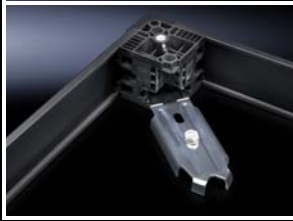
Also required:

- Base/plinth trim panels, side, see page 428



Base/Plinth

TS Base/Plinth



Base Mounting Plate

for

- TS Base/Plinth
- Flex-Block Base/Plinth System
- Base/Plinth, Complete

To fasten the base/plinth to the floor without moving the enclosure or bayed enclosure suite. For assembly screws up to 12 mm Ø.

Material:

- Carbon steel

Surface finish:

- Zinc-plated

Packs of	Model No.
10 pc(s).	2817.000

Fastening Bolts

for

- TS Base/Plinth
- Base/Plinth, Complete
- Base/Plinth, Stationary

Mounted on base/plinth trim panels, side. The fastening bolt is clamped into place to allow the installation of cable clamp rails. Tighten using hex wrench, width across flats 19 mm (0.74").

Material:

- Hexagon steel section

Surface finish:

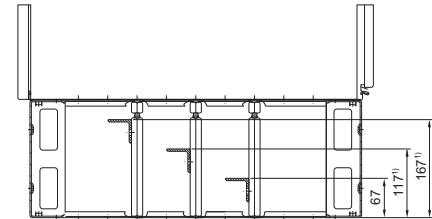
- Zinc-plated

For base/plinth trim panel Height inches (mm)	Packs of	Model No.
4 (100)	10 pc(s).	2819.000
8 (200)	10 pc(s).	2819.200



Accessories:

- Cable clamping rail, see page 574



¹⁾ Only with height 200 mm (8")

Leveling Component

for TS base/plinth

For retrospective leveling on uneven floors at the installation site up to a maximum of 15 mm. Installed through the corner piece of the base/plinth component. Adjust using hex wrench, width across flats 19 mm (0.74").

Advantages:

- A door offset caused by uneven flooring can be corrected
- Installed on the assembled enclosure, i.e. no need to plan leveling in advance

Load capacity:

- Max. permitted static load: 2500 N per leveling component (check the load capacity of the floor)

Supply includes:

- Assembly components

For base/plinth height inches (mm)	Packs of	Model No.
4 (100)	4 pc(s).	2891.000
8 (200)	4 pc(s).	2892.000

Cover Cap

for TS base/plinth components

As a replacement.

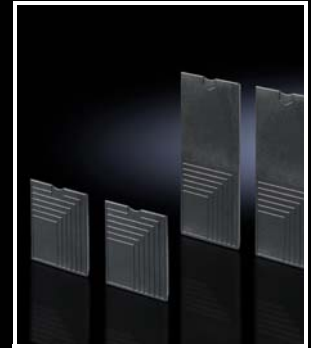
Material:

- Plastic ABS

Color:

- RAL 9005

For base/plinth height inches (mm)	Packs of	Model No.
4 (100)	4 pc(s).	8601.130
8 (200)	4 pc(s).	8601.140



Base/Plinth, Stationary

for PC

Design matches the housing, height 100 mm, with front projection.

Material:

- Carbon steel, 2.0 mm

Color:

- RAL 7035
- Design component, front: RAL 7015

Supply includes:

- 1 design component, front
- 1 base/plinth component, rear
- 2 base/plinth trim panels, side

For depth inches (mm)	Model No.
24 (600)	8800.920



Accessories:

- Twin castors 7495.000, see page 436
- Leveling feet 4612.000, see page 435
- Fastening bolts for cable clamping rails 2819.000, see page 430
- Support bracket 4183.000, see page 535



Filter Mat

for Flex-Block, vented version

To cover the trim panel in the Flex-Block. The filter mat is simply pushed into the trim panel from the rear. Can be shortened to required length.

For enclosure width inches (mm)	Packs of	Model No.
24/32 (600/800)	4 pc(s).	7583.500



Base/Plinth

TS Base/Plinth



Base/Plinth Components, Front and Rear

Stainless steel for TS, SE

Material:

- Stainless steel 1.4301 (AISI 304)

Surface finish:

- Brushed, grain 400

Supply includes:

- Mounting accessories for mounting on the enclosure

100 mm high:

- 2 trim panels front/rear

200 mm high:

- 2 corner pieces with removable trim panel
- 1 trim panel front/rear

For enclosure width inches (mm)	Height inches (mm)	Model No.
24 (600)	4 (100)	8701.600
32 (800)	4 (100)	8701.800
39 (1000)	4 (100)	8701.000
47 (1200)	4 (100)	8701.200
24 (600)	8 (200)	8702.600
32 (800)	8 (200)	8702.800
39 (1000)	8 (200)	8702.000
47 (1200)	8 (200)	8702.200



Accessories:

- Base/plinth trim, modular (perforated plate), see page 432



Base/Plinth Trim Panels, Side

Stainless steel

for base/plinth components, front and rear

To mount between the base/plinth components. For height 200 mm, two 100 mm base/plinth trim panels can be used. Base/plinth panels (100 mm high) can be installed turned through 90° to provide stabilization for bayed base/plinth components.

Material:

- Stainless steel 1.4301 (AISI 304)

Surface finish:

- Brushed, grain 400

Supply includes:

- 2 base/plinth trim panels including parts for attaching to the base/plinth components

For enclosure depth inches (mm)	Height inches (mm)	Model No.
16 (400)	4 (100)	8701.040
20 (500)	4 (100)	8701.050
24 (600)	4 (100)	8701.060
32 (800)	4 (100)	8701.080
16 (400)	8 (200)	8702.040
20 (500)	8 (200)	8702.050
24 (600)	8 (200)	8702.060



Also required:

- Base/plinth baying brackets 8601.100, see page 428, when fitting base/plinth trim panels turned through 90°



Accessories:

- Fastening bolts for base/plinth, see page 430

Technical details:

Available on the Internet



Base/Plinth Trim, Modular

for

■ TS Base/Plinth, Stainless Steel

■ Base/Plinth, Complete, Stainless Steel

For secure cable routing in the base/plinth between the floor and the enclosure.

Width: 175 mm

Material:

- Stainless steel 1.4301 (AISI 304)

Supply includes:

- 4 base/plinth trim panels

Note:

- One base/plinth trim is needed per 200 mm base/plinth width

For enclosure depth inches (mm)	Packs of	Model No.
16 (400)	4 pc(s).	2907.000
20 (500)	4 pc(s).	2908.000
24 (600)	4 pc(s).	2913.000



Accessories:

- Cable tie 2597.000, see page 576

Base/Plinth, Complete

Carbon steel for AE

Trim panels at the front and rear with fitted corner pieces and side trim panels.

Material:

- Carbon steel

Surface finish:

- Spray-finished

Color:

- RAL 7022

Supply includes:

- Mounting accessories for mounting on the enclosure

100 mm high:

- 4 corner pieces
- 2 trim panels front/rear
- 2 trim panels side

200 mm high:

- 4 corner pieces
- 1 trim panel front/rear x 200 mm
- 2 trim panel front/rear x 100 mm
- 4 trim panels side

Base/plinth for AE, 4" (100 mm) high

For enclosures		Base/plinth depth inches (mm)	Model No.
Width inches (mm)	Depth inches (mm)		
24 (600)	12 (300)	11 (279)	2816.200
32 (800)	12 (300)	11 (279)	2818.200
39 (1000)	12 (300)	11 (279)	2801.200

Base/plinth for AE, 8" (200 mm) high

For enclosures		Base/plinth depth inches (mm)	Model No.
Width inches (mm)	Depth inches (mm)		
24 (600)	12 (300)	11 (279)	2826.200
32 (800)	12 (300)	11 (279)	2828.200
39 (1000)	12 (300)	11 (279)	2802.200



Accessories:

- Fastening bolts, see page 430
- Base mounting plate, see page 430

Technical details:

Available on the Internet

Base/Plinth, Complete

Stainless steel for one-piece consoles, stainless steel

Height: 100 mm

Where necessary, two base/plinths can be installed one above the other.

Material:

- Stainless steel 1.4301 (AISI 304)

Surface finish:

- Brushed

Supply includes:

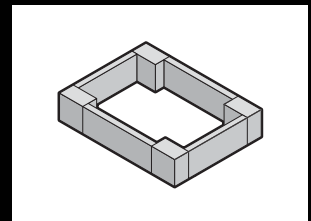
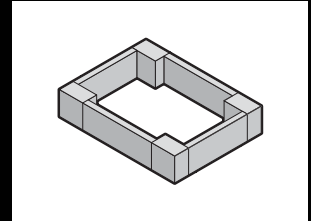
- Mounting accessories for mounting on the enclosure
- 2 trim panels front/rear
- 2 trim panels side

For enclosures/consoles		Model No.
Width inches (mm)	Depth inches (mm)	
24 (600)	16 (400)	2865.000
32 (800)	16 (400)	2869.000
39 (1000)	16 (400)	2867.000
47 (1200)	16 (400)	2870.000



Accessories:

- Leveling feet, see page 434
- Base/plinth trim, modular (perforated plate), see page 432



Base/Plinth

Base/Plinth



Leveling Feet

Mounted directly underneath the TS base/plinth and complete base/plinth. For unhindered access e.g. when cleaning the floor, and to even out for floor irregularities.

Load capacity:

- Max. permitted static load: 400 kg per leveling foot

Adjustment range:

- M12: 55 – 125 mm
- M16: 45 – 120 mm

Material:

- Stainless steel 1.4301 (AISI 304)

Thread	Packs of	Model No.
M12	4 pc(s).	2889.000
M16	4 pc(s).	2890.000



Possible alternative:

- Hygienic Design leveling feet, see page 164



Cross Member

for TS, SE, CM, TP, PC adjustable

- To increase stability
- Height 70 mm
- Adjustable to the housing depth

To increase stability, the cross members project 138 mm beyond the enclosure base frame at the front and rear. The rear part can be extended and re-screwed for deeper enclosures. For screw-fastening to base and enclosure with side, front and rear mounting holes. The castors and leveling feet may be secured to the M12 welded nuts.

Material:

- Carbon steel

Surface finish:

- Spray-finished

Color:

- RAL 7015

For housing depth inches (mm)	Packs of	Model No.
16 (400)	1 set(s)	8601.450
20 (500)		
24 (600)		
32 (800)	1 set(s)	8601.680



Accessories:

- Twin castors 6148.000, 7495.000, see page 436
- Leveling feet 4612.000, 7493.100, see page 435

Technical details:

Available on the Internet



Stabilizer

for TS IT

The pull-out stabilizer is quickly and easily retrofitted to the lower frame of the server racks and only extended when necessary.

Load capacity:

- Up to max. 150 kg static load

Material:

- Carbon steel

Surface finish:

- Zinc-plated

Supply includes:

- Assembly components

Note:

- The stabilizer cannot be used together with base plates, base frames or bases/plinths

Enclosure depth inches (mm)	Model No.
39 (1000)	7825.250



Accessories:

- Leveling feet, see page 435 and/or
- Transport kit, see page 436

